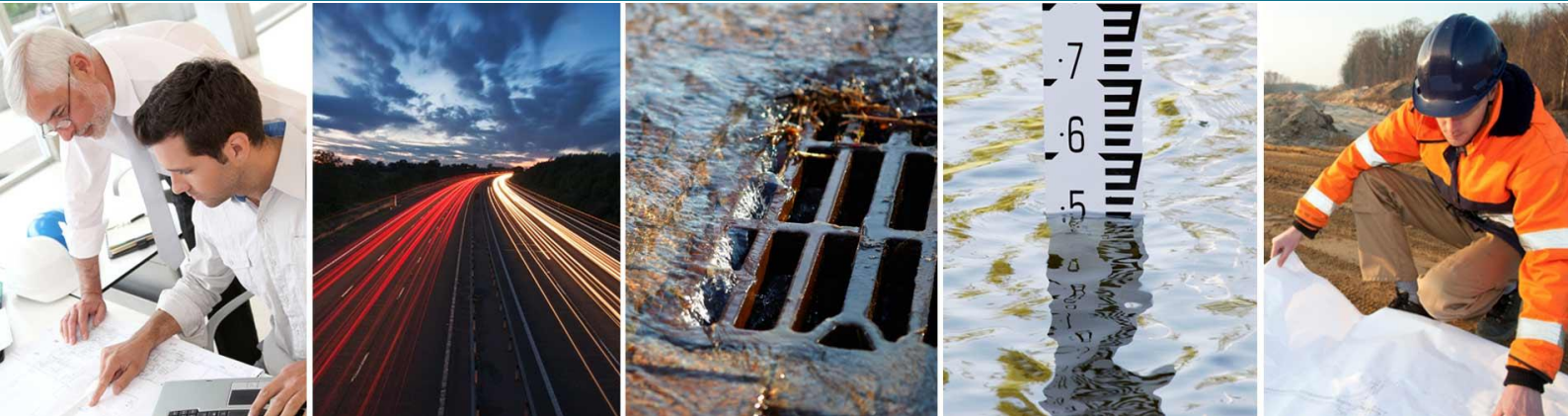


GTA Civils & Transport provides professional engineering services for projects of all sizes - from pre-planning through to post-construction



Based in the south of England, **GTA Civils & Transport** provides civil engineering and Transport Planning services for clients throughout UK and abroad. Continuously operating since 1974, we have a wealth of experience and knowledge at our disposal.

We are proud of our reputation for customer service and seek to develop long term relationships with clients by producing quality work and responding quickly throughout our appointment.

Our team has the flexibility and knowledge to design and manage a wide variety of projects – from major civil engineering, infrastructure and transport schemes, to smaller scale works such as minor road realignments and residential flood risk assessments.

## Skills and Support

We understand client needs for fast and efficient reaction to project demands. Our team combines a wide range of skills to tailor our service to client needs. We produce high quality, innovative and cost-effective solutions.

As well as technical expertise, the team also focuses on client support and feedback. We value all our clients equally, whatever the size of project. In-house, cutting-edge computer software programs ensure fast and accurate delivery to clients and industry standard design.

## Quality Control

To ensure that each job is managed optimally, we have very rigorous quality control procedures in place to which all team members adhere.

We are compliant with CHAS 2003 (Contractors Health and Safety Assessment Scheme) and appear on their database. We are also ISO9001 Registered and for two years running we have received a diamond award for customer service.



# GTA Services

## Civils Engineering Services



Using a logical but imaginative approach, we have solved a number of seemingly impossible problems.

### Civil Engineering & Highway design

We work closely with our clients from the start of the project to the end to deliver a scheme which is cost effective, easy to maintain and straight forward to build, whilst still complying with all the relevant stator requirements.

Using a logical but imaginative approach, we have solved a number of seemingly impossible problems.

#### Drainage Design

All surface water disposal systems should now be designed on a sustainable basis, minimising the impact on the environment by utilising appropriate SuDS techniques prior to discharge. To achieve this, we use the leading industry standard drainage modelling system – **MicroDrainage** - for all of our drainage design, providing clients with a full range of foul and surface water network design services.

#### Highway and External Works Design

We can design highway schemes from inception through to construction, including adoptable schemes:

### Civil Engineering Services

- Foul and surface water drainage design
- Section 104/116/185 sewer adoptions / diversions
- Site level design
- Digital ground modelling including cut and fill
- Sustainable Drainage Systems (SuDS)
- Sewer / watercourse diversions
- Estate road design for Section 38 adoption.
- Section 278 works including Junctions, crossings etc.
- Estate drainage design for Section 104 adoption
- Design of car parking and hard landscaping
- Preparation of combined utility services layouts.
- Section 38 proposed road adoptions.

continued ..

- Section 38 – New adopted highway in private land
- Section 278 – Works to existing highway

- Highway design from small private roads to large infrastructure projects.
- Road maintenance recommendations

We will prepare technical drawings for submission to the County Council highways department and see through the project to technical approval. We have designed new roundabout schemes, signalised junctions and priority junctions.

We design proposed site levels with a view to minimising volume of cart-away as much as possible within the site's constraints.

We also use the latest **AutoCAD** software and 3D road design packages.

**GTA Civils & Transport** is a firm believer in high-quality presentation and works closely with architects, structural engineers, M&E engineers, design and build contractors and developers to achieve this.

## Flood Risk Services



We have an excellent track record; since January 2010 we have issued over 1000 FRA reports, with a success rate of over 95%.

GTA Civils & Transport specialises in the preparation of Flood Risk Assessments (FRA) and other associated documents, including Flood Risk Management Plans and Drainage Statements.

We have an excellent track record; since January 2010 we have issued over 1000 FRA reports, with a success rate of over 95%.

GTA Civils & Transport has been successful in obtaining approval for particularly difficult projects, including those lying within areas prone to coastal or river flooding. Surface Water flooding is increasingly being treated as strictly as river flooding and we have had numerous successes with these challenges.

We are happy to provide advice on the proposed levels and positioning of buildings in order to maximise the chances of success for our clients, both in relation to Local Planning Authority or Environment Agency approvals and to ensure the long term health and safety of the sites' occupants.

Our appointments have been many and varied, including projects comprising dwellings, commercial, retail, education, public assembly and worship, industrial and agricultural components.

We have helped clients obtain planning permission for new builds, extensions, change of use and divisions (where a single dwelling is split into two or more flats – or HMOs).

### Our Flood Risk Assessment Services

- Flood Risk Assessments to comply with NPPF and PPG
- Flood plain volumes compensation work
- Sustainable Drainage Systems (SuDS)
- Sewer and watercourse diversions
- Surface and foul water drainage strategy
- Attenuation and storage design for the peak 1 in 100 year storm event (plus allowance for climate change) using MicroDrainage software.
- Soakaway design to BRE 365
- FRAs to comply with current legislation and guidance
- Flood Risk Management Plans

## Flood Risk and Legal Policy

The **National Planning Policy Framework (NPPF)** is the national legal policy document governing flood risk. All developers must comply with it in order to obtain planning consent for their development. GTA Civils & Transport has extensive knowledge of the NPPF and its requirements, having prepared hundreds of Flood Risk Assessments over the eight years that the EA and Local Planning Authorities have required them.

The NPPF requires that all planning applications for sites over one hectare include a formal Flood Risk Assessment – even if the site is not within an area recognised as being prone to flooding. The FRA ensures that all aspects of the surface water strategy are taken into account when the site is designed.

We also prepare Flood Risk Assessments and drainage designs in accordance with **BREEAM Pol 3** (surface water runoff) and all other relevant guidance and legislation.

## Decades of Drainage Design

Our extensive experience of drainage design means we are very familiar with the requirements of the Environment Agency and other Lead Local Flood Authorities, enabling us to prepare all calculations and design drawings in-house.

Since April 2015, new government guidance requires that **Sustainable Drainage Systems (SuDS)** are incorporated in all new developments of 10 homes or more and on major commercial developments. Drainage policy dictates that Sustainable Drainage Systems (SuDS) are incorporated in all new developments as far as practical. Lead Local Flood Authorities are also becoming more stringent when examining new schemes. GTA Civils & Transport are experts in designing and incorporating SuDS in our drainage strategies.

GTA Civils & Transport has a successful track record in carrying out **Flood Plain Volume Compensation** exercises for projects that require them. In certain conditions, where the raising of levels is proposed in a flood plain for instance, it is necessary to replace any volume lost, normally by lowering nearby ground levels. This process involves a strict protocol, imposed by the EA, which can make it particularly time consuming. Our expertise enables us to minimise the time required on such aspects of site design.

Our customers find our fees very competitive; basic **Flood Risk Statements** start from **£550 + VAT** (Sites within an undefended Flood Zone 3 are more expensive because of the additional level of detail needed). We provide free, comprehensive quotations with a full breakdown when requested.

## Transport Services



We have decades of combined experience in preparing Transport Assessments, Statements and Reports to support planning applications.

The transport impacts of any development need to be considered throughout the planning process – from feasibility to construction. **GTA Civils & Transport** can provide all the professional advice and guidance you need.

Our highly-experienced Transport team has worked on a wide range of projects – from residential, commercial and education, to faith establishments and solar farms. We also have significant Local Government experience within the Transport Team. This allows us to offer a comprehensive service to both Planning and Highway Authorities from the development of area wide transport models to local access requirements.

Transport Assessments play a key part in our service provision and we have successfully delivered assessments for development projects of all sizes.

### Master Planning & Feasibility Assessments

We provide a full package of transport advice and guidance from small residential and commercial schemes to large multi-use developments. This includes:

- Advice on strategic access, local access and the wider traffic impacts of larger scale developments.
- Assessment of the accessibility of the site for pedestrians and cyclists and the integration with existing settlements.
- Assessment of opportunities to integrate with existing public transport services and hubs

### Input into Local Development Plans

We provide a range of services from building transport models, through interpretation of new or existing models outputs, to assessment of smaller development options. We can also assist with policy development.

### Advice on planning applications

We can provide:

- Advice and support in relation to applications already submitted.
- Quick detailed professional advice for developers and residents.
- Assessment of the key local issues such as road safety, highway link & junction capacity and accessibility.

## Transport Assessments, Transport Statements, & Transport Reports

We can prepare a range of different reports depending on the nature and scale of your proposed development.

A Transport Assessment / Statement / Report is a comprehensive and systematic process that sets out the transport issues relating to a proposed development and its transport impacts. It identifies measures to deal with any unacceptable transport impacts of the development and to maintain or improve accessibility and safety for all modes of travel, particularly for sustainable alternatives to the car such as walking, cycling and public transport.

## Highway Access reports

We offer Highway Access Reports for smaller access proposals including assessment of vehicle speed, road safety and visibility requirements.

## Travel Plans

Our Travel Plans will cover the short, medium and longer term management strategies for encouraging sustainable travel options at your site.

We prepare Travel Plans to suit your individual needs including:

- Travel Plan Frameworks,
- School Travel Plans;
- Large scale Residential Travel Plans;
- Travel Plans for business

We also provide post planning permission management of your Travel Plans including guidance, surveys and reports.

## Expert Witness at Planning Appeals

We have extensive experience and knowledge of the planning appeals process and the public examination of local plans. We offer expert transport witness input into all types of appeals:

- Written Representations,
- Informal Hearings and;
- Public Inquiries.

## Traffic & Transport Modelling

We offer a range of traffic and transport modelling services, including the development of wider strategic transport modelling such as SATURN, & VISSIM. We also offer junction impact analysis using:

- PICADY
- ARCADY
- LINSIG

## Assistance to Local Authorities

As we have extensive local Government experience, we are able to offer a full Transport Development Control service to Highway Authorities. This can be provided on a case by case basis or more comprehensively over a fixed term.

## Pre-Land Acquisition Services



We provide technical assistance to developers prior to the purchase of new sites; our extensive experience in development means we have a good understanding of the commercial needs of the client. We can also provide initial highways planning advice.

Should site constraints require an alternative means of drainage, we can arrange capacity checks, topographical and CCTV surveys and site investigation reports. We also provide the following reports at an early stage of the project:

- Flood Risk Assessments
- Transport Assessments / Statements
- Travel Plans
- Utility feasibility studies

Through our experience of working with developers, we understand the urgency and pressures involved in providing a viable drainage strategy. We pride ourselves on the timely preparation of cost-effective road and drainage solutions.

We can produce a pre-acquisition technical report highlighting all areas of concern as well as an indication of budget costs and potential unusual costs, utilising survey data, site investigation reports, existing services information and any other information that is available.

## Other Services

Using the relationships we have developed with companies over a range of disciplines, we are able to organise services beyond our immediate expertise, bringing clients the benefit of a single point of contact at GTA Civils.

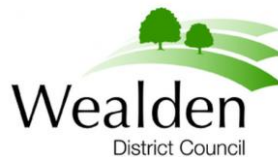
Other services we can offer via partners are:

- Topographical Surveys
- Site Investigations
- Structural Engineering



## Clients

Our client list ranges from commercial developers and housebuilders, to Local Authorities and the Public Sector. We also undertake a large number of small scaler projects for SME's and domestic customers. Key clients include:



## Testimonials

*"As a developer we like to use GTA Civils & Transport for their value engineered solutions."*

**John Hawkins**, Director, Valad & Benchmark Estates

*"Their professionalism, versatility and attention to detail gives us every confidence in recommending GTA Civils & Transport every time, no matter the scale of the project."*

**Ben Richardson**, Director, Heritage Developments

*"GTA have provided a professional, organised and efficient service. We look forward to working together on future projects."*

**Grant R. Martin**, Ward Homes, a division of Barratt Homes

*"We would recommend GTA Civils & Transport without hesitation. We have used them on a number of projects of varied complexity and size. We have always found their service to be professional, thorough and delivered in a friendly, efficient manner."*

**Anne Martin**, Marcon Bespoke Homes

# Company History

## 2019 | GTA CIVILS & TRANSPORT

GTA Civils is relaunched as GTA Civils & Transport to reflect the growth of the company's key service offerings. Further office expansion planned.

## 2019 | JOINT VENTURE INITIATED

GTA enters into a Transport Planning focused joint venture working collaboratively on bids for larger frameworks.

## 2016 | GTA OFFICE EXPANSION

GTA expand their offices in Burgess Hill, doubling the floor area to accommodate the expanding Transport Department.

## 2014 | GTA TRANSPORT SERVICES

Lawrence Stringer joins GTA Civils to lead our new Transport Planning Team, bringing 27 years of experience working in the public sector with East & West Sussex County Councils.

## 2011 | GTA IN AFRICA

GTA Civils undertake technical quality audits on major highway schemes in Africa.

## 2008 | FLOOD RISK FURTHER DEVELOPED

GTA Civils make progress in developing the flood risk assessment side of the business by branching into complex stream modelling.

## 2007 | GTA MOVES TO CHURCH WALK

GTA Civils make a successful move to 66a Church Walk, Burgess Hill. The new office is well appointed and provides a bright and airy work environment for staff.

## 2006 | MANAGEMENT CHANGES

Neil Stevenson joins the company as a technical director; Gerald Tobias takes early retirement and continues as a company consultant; Emma Horsby hands over as managing director to Martin Roberts. GTA achieves CHAS accreditation.

## 2005 | INVESTOR IN PEOPLE

GTA Civils achieves Investors in People recognition at the first attempt!

## 2004 | GTA'S 30TH ANNIVERSARY

Emma Hornsby becomes sole managing director and Martin Roberts is appointed a director. GTA Civils celebrates 30 years in business.

## 2003 | CHANGES TO CORE SERVICES

GTA Civils withdraw from M&E engineering in order to concentrate on the core business of Civils, Highways, Drainage and Infrastructure services.

## 2002 | SUCCESSION PLANNING

The directors implement a 5-year programme of succession planning; Gerald Tobias and Emma Horsby become joint managing directors.

## 2002 | RANGE OF SERVICES EXTENDED

GTA establishes an association with Highway Associates, extending our range of services to include highway engineering.

## 1996 | INCORPORATION OF PETER LINES

The incorporation of Peter Lines & Partners by GTA Civils broadens the scope of services to encompass a wider building services capability.

## 1992 | GTA FACILITIES MANAGEMENT

Emma Hornsby launches GTA Facilities Management to provide survey and project management services for the implementation of minor to medium building services contracts.

## 1974 | GERALD TOBIAS ASSOCIATES

Gerald Tobias establishes the private practice of Gerald Tobias Associates (now trading as GTA Civils Ltd), a consultancy specialising in services associated with public health and infrastructure engineering - drainage, sewage disposal, road and hard standing design, plumbing, water and fire engineering.

## Management team



**Martin Roberts IENG, ACIWEM, MCIHT**

**Managing Director**

Martin is a director who enjoys giving personal attention to his clients by successfully managing their projects and through good communication. He has a reputation for producing high quality, innovative and cost effective design solutions.

Martin has particular skills with regards to Flood Risk and SUDS (Sustainable Urban Drainage Systems) and overcoming Environment Agency objections and SUDS officer's objections on difficult sites. He is also responsible for the financial well-being of the company and personally overseeing the workload of the engineering team.



**Neil Stevenson MCIHT**

**Director**

Neil takes the lead at GTA in developing new business and extending existing relationships. He has a well-rounded wealth of experience within the construction sector and is always willing to offer the benefit of his experience to new and existing clients. He has been in construction since 1987 and has held senior positions in previous employment prior to joining GTA Civils as a director in 2006.

Neil is responsible for helping GTA Civils & Transport develop its highways team and also increase the commercial and residential housing market client base. In addition, Neil shares the responsibility for all GTA projects and managing the team of senior engineers, engineers and technicians.



**Lawrence Stringer BENG, CENG, MCIHT, MRTPI**

**Director**

Lawrence heads up the Transport Planning Team at GTA. He has over 27 years of experience with senior management roles at both East Sussex County Council and West Sussex County Council.

Lawrence has good knowledge and experience of local government and an excellent understanding of the whole planning process, from developing planning policy through the application process to construction involving Section 38 and 278 agreements. During his time in the private sector, he's been responsible for delivering numerous Transport Assessments for a range of development types and is responsible for the long term transport planning and traffic monitoring of the Bishop's Stortford North Development.

During his time at East Sussex, he was also part of the TRICS Management Board and has detailed knowledge of the TRICS database and its application in the development planning process. Lawrence also is a Reviewer for the Chartered Institute of Highways & Transport for those wishing to become Chartered & Incorporated Engineers. He is also helping the CIHT develop their presence in Sub-Saharan Africa.

## Contact Us



If you have an enquiry or need some professional advice, our friendly, professional team is happy to help.

**Tel:** 01444 871444

**Email:** [enquiries@gtacivils.co.uk](mailto:enquiries@gtacivils.co.uk)

**Web:** [www.gtacivils.co.uk](http://www.gtacivils.co.uk)

**Address:** Gloucester House  
66a Church Walk  
Burgess Hill  
West Sussex  
RH15 9AS



We look forward to hearing from you